

# SERVING FROM THE HEART ACROSS THE WORKFORCE

*A symposium on the integration of promotores and  
community health workers in different settings*

## Visión y Compromiso™



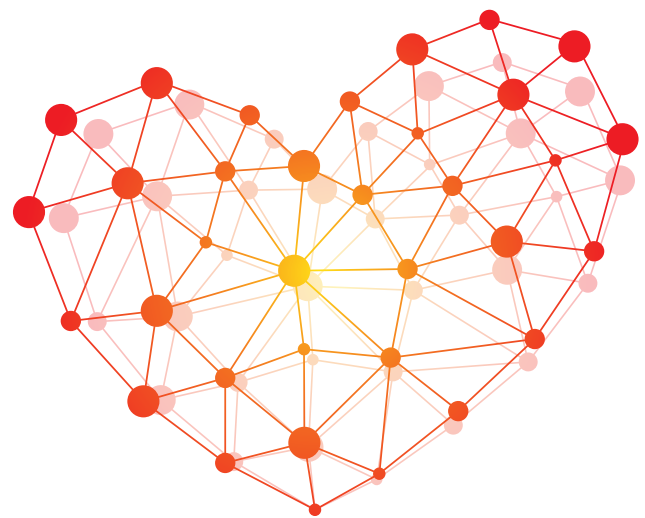
An opportunity to meet and learn  
from colleagues in the clinic,  
county, academic and non-profit  
sectors

**THURSDAY, FEBRUARY 8, 2018**

**8:30 a.m-3:00 p.m**

Project Concern International (PCI)  
US & Border Programs  
4305 University Avenue Suite #640  
San Diego, CA 92105

Over the last several years, there has been an increase in interest from clinics, nonprofits and researchers wanting to integrate promotores into their work. As a result, there are many questions, uncertainties and requests for consultations and work to determine what roles are most relevant for a promotor or community health worker. The goal of this symposium is to facilitate rich discussions to help clarify some of these questions through panel and round table dialogues.



Setting the stage—El Corazon of the  
Promotor and Community Health Worker

Panel I: Emerging Trends in the Promotor  
and Community Health Worker Models

Panel II: Exemplary Examples:  
What Works, Challenges and Solutions

Round Table Discussions:  
Workforce Challenges and Solutions

For questions please contact Ana Velazquez at [ana@visionycompromiso.org](mailto:ana@visionycompromiso.org)

Please rsvp by clicking on the following link : <https://goo.gl/forms/Wb3OXZZpI2ArJDz13>